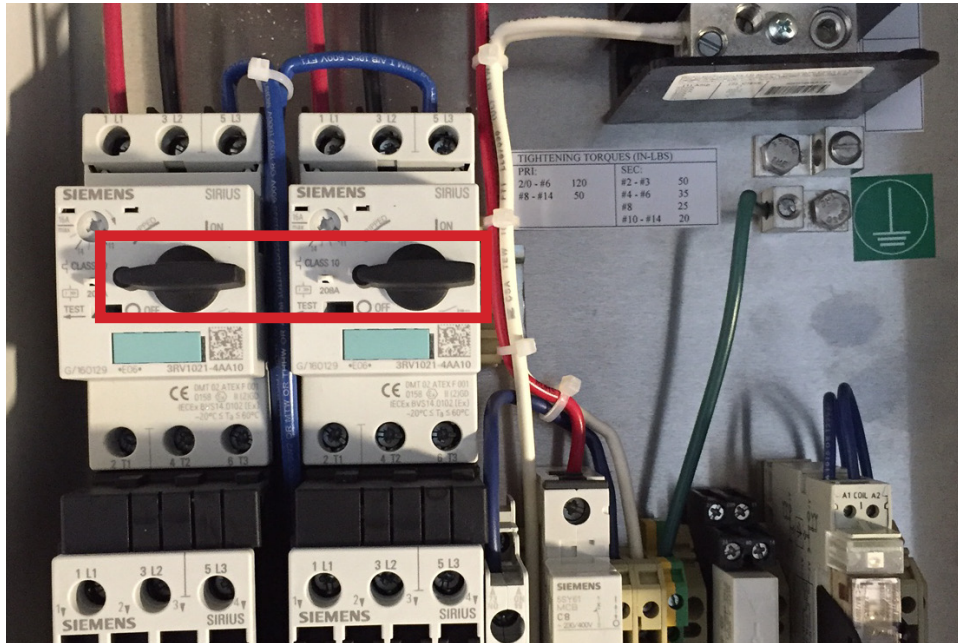
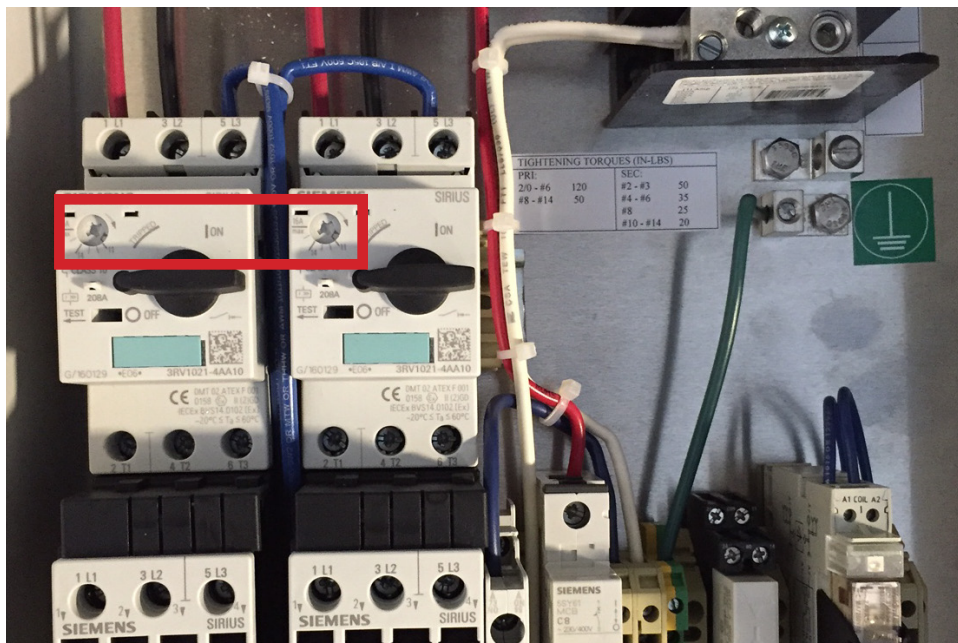


TROUBLE SHOOTING | FEATURE PUMP NOT RUNNING

STEP 1 | Verify that the breaker has not tripped. If it has with the power closed, verify for loose wiring;



STEP 2 | Verify the amperage settings on the msp;

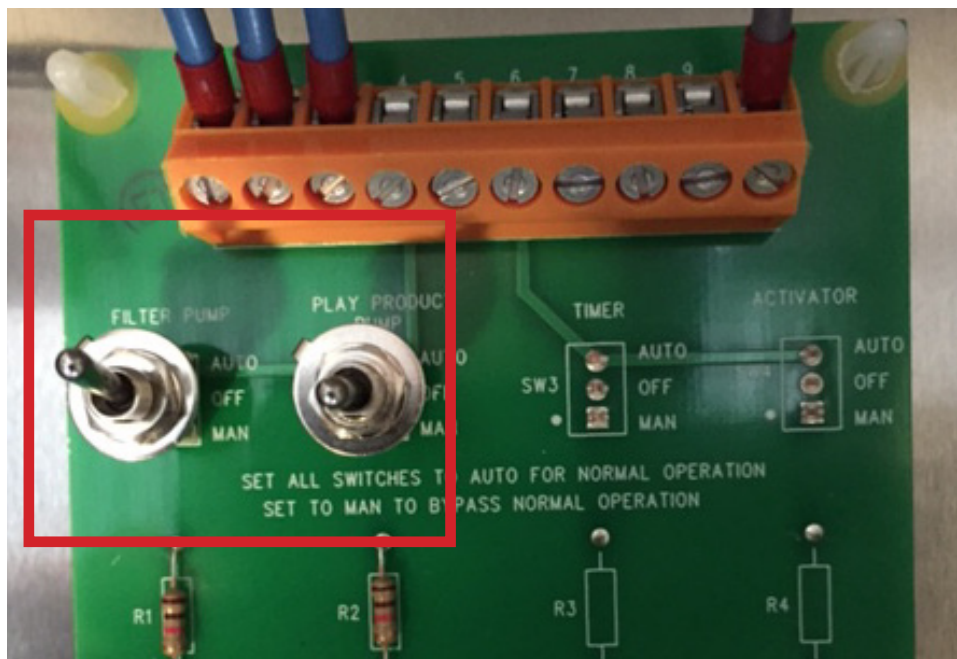


STEP 3 | If it continues to trip, a qualified electrician would need to determine the root cause;

STEP 4 | Water Flow Alarm? Verify that you have flow and observe Input (light) on your specific controller to where the flow switch is wired to. It should be lit solid or flashing depending on the type of flow switch;

STEP 5 | Set the Pump in manual mode* (see controller manual). Setting the pump in manual mode bypasses flow switches. If the msp is working correctly, the pump should come on;

* Smart Touch Controller shown as reference



STEP 6 | Replace pump.